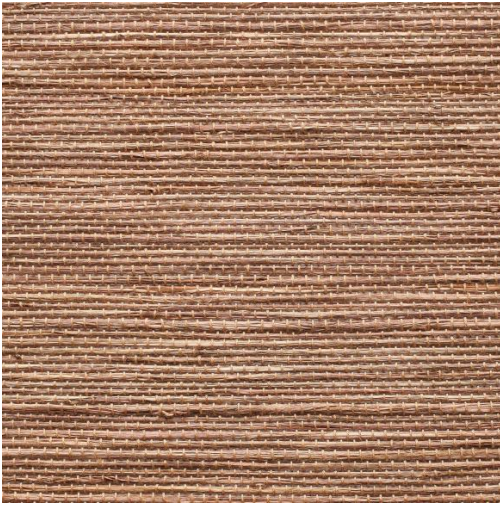


WOVEN SHADES

London - Cinnamon

1-100-10



London is a natural weave consisting of strips of plant fibers woven together with cotton thread. Rich with texture and color variation; London has some slubs and knots which are part of the natural beauty of the product.

Contents : Natural Fiber

Width : 94

Opacity : Light Filtering

Price Level : 4

Notes : The fibers used to make our natural woven shades are created in nature. As a result, texture and color variations should be expected. We recommend where large orders are specified, that they are ordered at the same time to ensure the closest possible match. Please feel free to contact us for a CFA (cutting for approval).

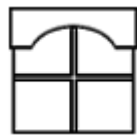
The fibers used to make our natural woven shades are created in nature. As a result, texture and color variations should be expected. We recommend where large orders are specified, that they are ordered at the same time to ensure the closest possible match. Please feel free to contact us for a CFA (cutting for approval).



Roman



Roller



Valance



Panel Track