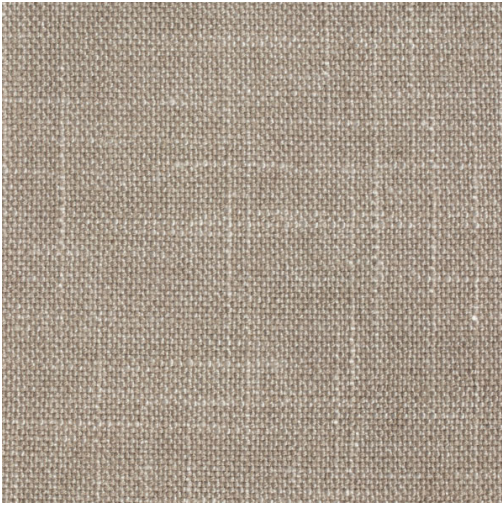


DRAPERY

Denmark - Wheat

2-200-155



Denmark is a mid weight synthetic blend with the look and feel of a high quality linen.

Contents : POLY / LINEN / VISCOSE

Width : 54

Opacity : Light Filtering

Price Level : 4

Notes : Note: 36% POLY / 16% LINEN / 26% COTTON 22% VISCOSE

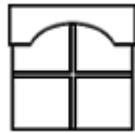
Note: 36% POLY / 16% LINEN / 26% COTTON 22% VISCOSE



Roman



Drapery



Valance



Cut By The Yard